

QuickEST[®]



Item	Description	Quantity	Unit	Total	Adjust	Labor	Matl	Equip	Oth
Total	Adjusted Cost	1	COST	811,346.91	1,000.00	143,659.91	193,397.71	34,328.35	1,000.00
	Overhead	10.00%		81,134.69					
	Profit	6.00%		48,680.81					
	Sub-Total			941,162.41					
	Bond			9,411.62					
	Total Bid			950,574.03				Markup	17.16%

Unit Price (DOT)
- or -

Item No.	Bid Item Description	Qty	Unit	Unit Price					
01	Common Items	1.00	LUMP	0.00	0.00	0.00	0.00	0.00	0.00
02_25323	Mobilization	1.00	LSUM	27,432.66	0.00	6,889.92	12,157.00	2,880.00	0.00
03_70626	Mobilization	1.00	LSUM	2,518.94	0.00	0.00	2,000.00	0.00	0.00
04_25600	Field Office and Laboratory	1.00	EACH	18,223.07	0.00	14,354.00	0.00	0.00	0.00
05_25200	Removal of Existing Structure	1.00	LSUM	20,071.27	1,000.00	7,206.50	3,000.00	0.00	0.00
06_20100	Contractor Construction Staking	1.00	LSUM	60,038.49	0.00	43,305.80	4,090.50	0.00	0.00
07_12340	Foundation Stabilization (SET)	1.00	CU M	38.66	0.00	0.00	0.00	0.00	0.00
08_71554	Concrete for Seal Course (SET)	1.00	CU M	163.73	0.00	0.00	130.00	0.00	0.00
09_70580	Flagger (SET)	1.00	HOUR	37.10	0.00	28.97	0.00	0.00	0.00
10_25361	Clearing and Grubbing	1.00	LSUM	2,855.58	0.00	612.80	150.00	1,610.00	0.00
11_12420	Rock Excavation	239.00	CU M	112.22	0.00	2,451.20	10,592.50	9,590.00	0.00

Total Bid Price		Alternates				Summary				
Div.	Labor	Matl	Equip	Other	Subs	Markup	Total	Quantity	Unit	
1	General Conditions	0.00	0.00	0.00	0.00	0.00	0.00			
2	Sitework	1,287.87	269.44	500.30	0.00	5,050.00	229.54	7,337.15		
3	Concrete	71,078.50	34,440.11	1,570.83	0.00	29,100.00	12,140.06	148,329.51	511.24 CY	
4	Masonry	4,524.93	3,930.23	22.83	0.00	0.00	932.16	9,410.15		
5	Metals	0.00	0.00	0.00	0.00	3,700.00	0.00	3,700.00		
6	Wood & Plastics	386.96	420.95	0.00	0.00	0.00	84.54	892.44		
7	Thermal & Moisture	0.00	0.00	0.00	0.00	0.00	0.00	0.00		
8	Glass	0.00	0.00	0.00	0.00	0.00	0.00	0.00		
9	Interiors	8,716.57	9,857.17	300.00	0.00	19,060.00	1,909.01	39,842.75		
10	Specialty	0.00	0.00	0.00	0.00	0.00	0.00	0.00		
11	Equipment	0.00	0.00	0.00	0.00	0.00	0.00	0.00		
12	Furnishings	0.00	0.00	0.00	0.00	0.00	0.00	0.00		
13	Special	0.00	0.00	0.00	0.00	0.00	0.00	0.00		
14	Conveying	0.00	0.00	0.00	0.00	0.00	0.00	0.00		
15	Mechanical	0.00	0.00	0.00	0.00	0.00	0.00	0.00		
16	Electrical	0.00	0.00	0.00	0.00	0.00	0.00	0.00		
Total	85,994.83	48,917.89	2,393.96	0.00	56,910.00	15,295.31	209,511.99			
Cross Check Totals	85,994.83	48,917.89	2,393.96	0.00	56,910.00	15,295.31				
Cross Check OK										
Total Hours	1,867.61									
						Overhead	15.00%	31,426.80		
						Profit	5.00%	10,475.60		
						Sub-Total		251,414.39		
						Bond		2,514.14		
						Bid Total		253,928.53		
Bid Summary										
Alternates	Labor	Matl	Equip	Other	Subs	Markup	Total Cost	Alt Bid		
Guard House	3,117.59	9,303.70	412.16	0.00	2,984.00	1,061.66	16,879.11	20,457.48		

Base Bid With Alternates
- or -
Your own custom estimate template.

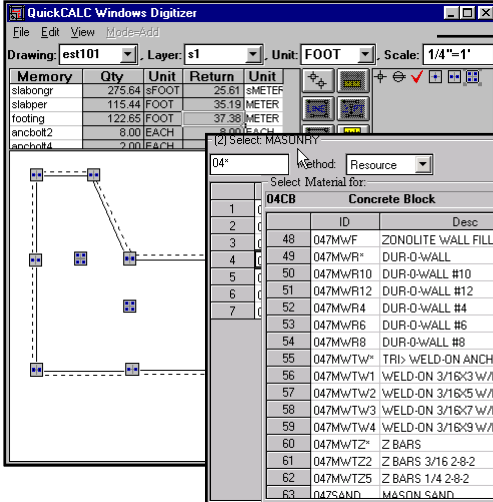
The Ultimate Estimating Toolbox !



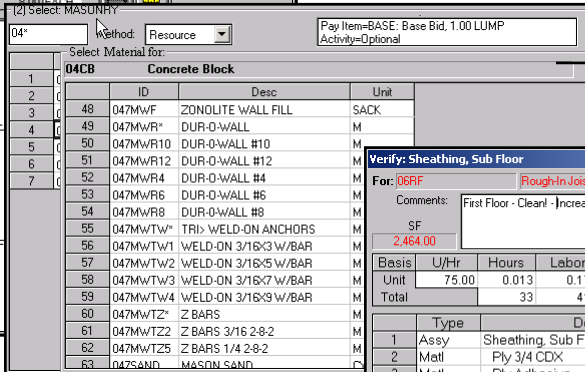
Since 1975

11125 Johnson Drive, Suite B
Shawnee, KS 66203
1-800-456-2113

QuickEST has the right tool for each takeoff situation...



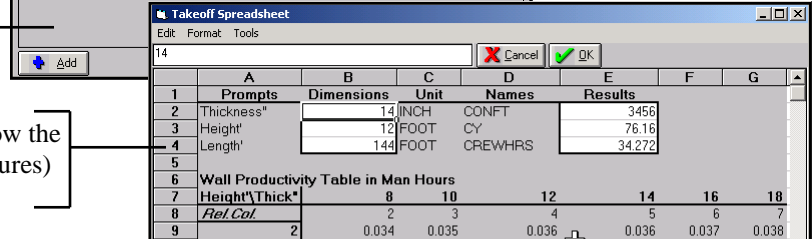
Digitize: Quantities, Lengths, or Areas may be digitized and graphically displayed with optional Metric/English conversion. Multiple Layers (drawings) are allowed along with Auto Scaling for reduced scale drawings.



Resources: You may directly takeoff Labor, Material, Equipment, or other cost detail to supplement your Assembly, Spreadsheet and Procedure takeoff.

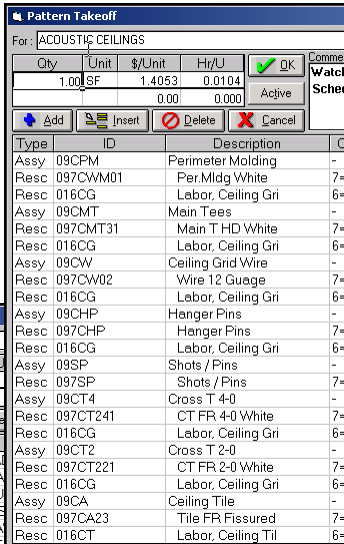
Confirmation: During takeoff, Productivity may be modified, Comments entered, or pricing may be modified as required.

Assemblies: Combine Labor, Material, Equipment and other costs into Assemblies using Labor productivity of Hrs/Unit, Units/Hr, or Units/Day.

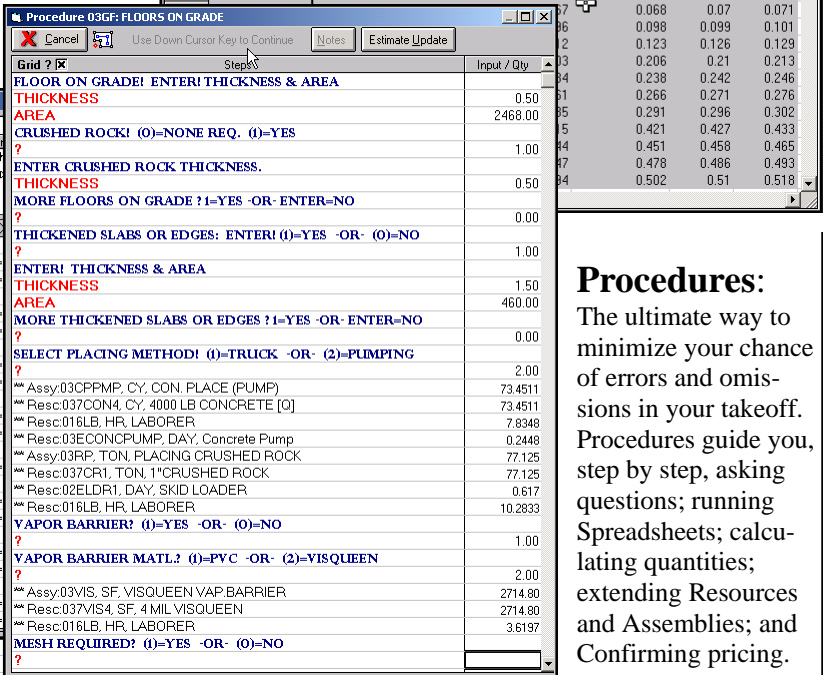
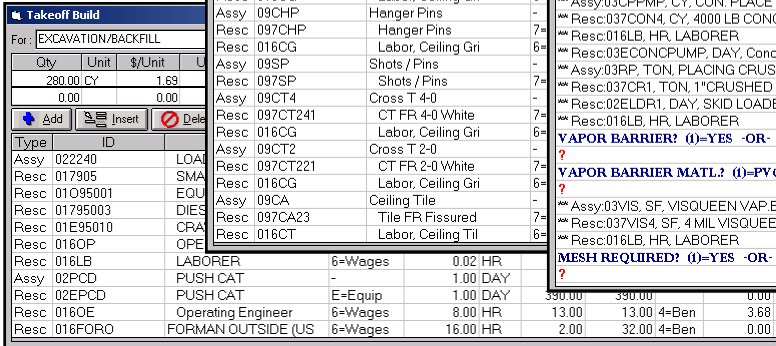


Spreadsheets: Excel* compatible spreadsheets allow the calculation of quantities (for Assemblies or Procedures) or for direct entry of estimated costs.

Pattern Takeoff: Allows you to apply new quantities to prior takeoff.



Takeoff Build: Allows you to build Crews on the fly and save them as Assemblies for later use.



Procedures: The ultimate way to minimize your chance of errors and omissions in your takeoff. Procedures guide you, step by step, asking questions; running Spreadsheets; calculating quantities; extending Resources and Assemblies; and Confirming pricing.

Procedures may be easily written, pasted together, and tested using the optional Procedure Module.

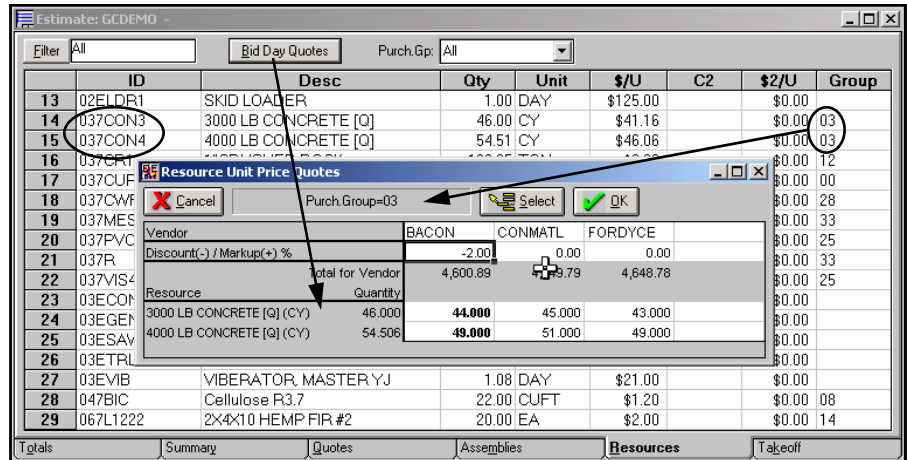
Lump Sum Takeoff: Allows hours (optionally by craft) and estimated costs to be added to the estimate.

* Excel is a registered trademark of Microsoft Corporation

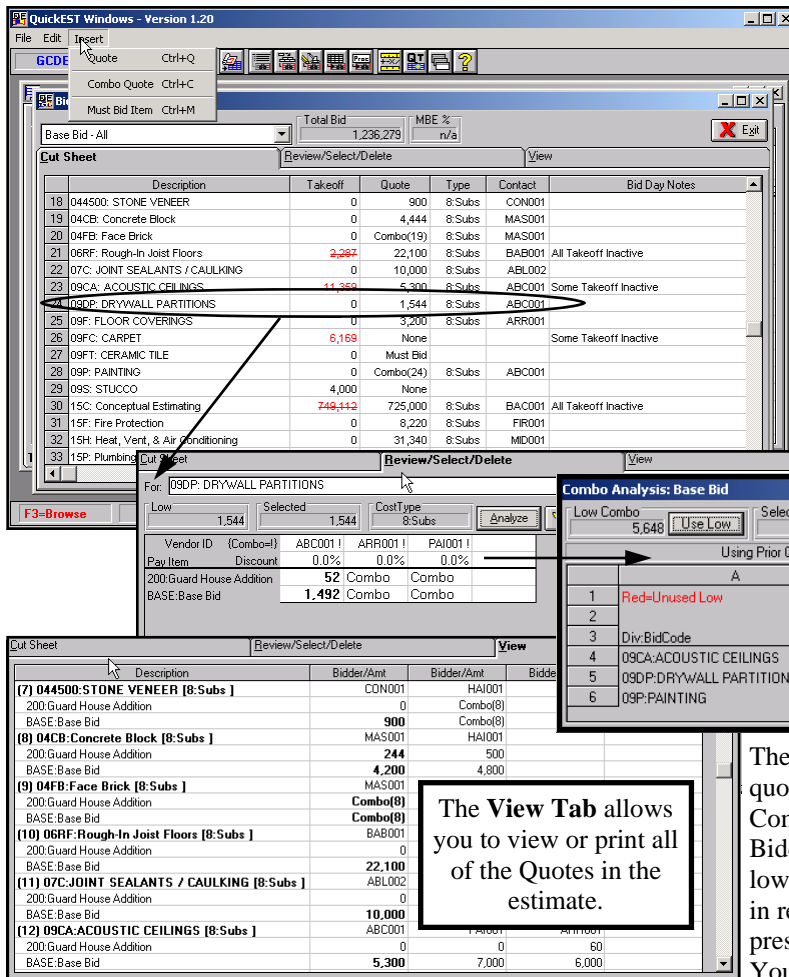
The Bid Day Quotes Module is a Quote Handling Machine...

From the Estimate Resource Tab, the **Unit Price Quote** Dialog...

You may take Quotes on Resources, with the same Purchasing Group, by selecting one and then clicking on Bid Day Quotes. Note that three Quotes have been taken for Ready Mix Concrete. The BACON Quote is currently low due to the 2% discount. The program automatically recommends the low discounted price for a single vendor. You may override the selection to multiple vendors, if desired, or select a vendor other than the low vendor. When a Quote (or on override price) is accepted for a Resource, EVERY takeoff item that uses the Resource is updated, as well as the estimate totals.



From the Tools Menu or the Toolbar, the **Bid Day Quotes** Dialog...



The **Cut Sheet** lists all Takeoff Items flagged as Must Bid Items or containing Takeoff or Quotes. The Insert Menu allows you to insert new Items, a Quote, or a Combo Quote (one bid for multiple Items). Note that on the left, the Quote on Line 20 is being bid in combination with Line 19. Also note that you may exclude some or all of your takeoff when quotes overlap your takeoff. Line 27 shows an Item with missing takeoff or quotes.

The **Review/Select/Delete** Tab allows the comparison, analysis, and selection of Quotes. Discounts may be quickly entered as well as Quote amounts for other Bid Items or Alternates.

The **Combo Analysis** Dialog is presented whenever a quote is entered or changed that overlaps an Item with a Combo Quote. The system recommends the low Base Bidder as shown above and indicates, in red, when the low bidder is not used. Each Alternate is then analyzed in relation to the Base Bid and the low combination is presented, even if the low base bidder would not be used. You may always override the selection, if desired.

The **View** Tab allows you to view or print all of the Quotes in the estimate.

QuickEST has so many time saving features...

For example, you may *drill down* on ANY summary cost to determine the details ...

Shown at the right is the result of a double click on the Division 3 Equip Cost. The Estimate Query Dialog shows the takeoff items containing Div. 3 Equipment. Double clicking on the Footings then displays the Equipment Cost allowing you to change the detail, if required.

The QuickEST advantage is that you can work at the summary level and drill down to the detail when needed.

Note that you may make selected lines of takeoff Inactive or Active. A great feature when a Sub overlaps your takeoff.

Div.	Labor	Matl	Equip	Other	Subs	Markup	Tot
1 General Conditions	0.00	0.00	0.00	0.00	0.00	0.00	
2 Sitework	547.88	163.14	260.25	0.00	4,000.00	105.74	5,077.01
3 Concrete	147,636.95	1,839.10	316.81	0.00	0.00	25,294.53	181,477.39
4 Masonry	0.00	0.00	0.00	0.00	0.00	0.00	
5 Metals	0.00	0.00	0.00	0.00	0.00	0.00	
6 Wood & Plastics	0.00	0.00	0.00	0.00	0.00	0.00	
7 Thermal & Moisture	0.00	0.00	0.00	0.00	0.00	0.00	
8 Glass	0.00	0.00	0.00	0.00	0.00	0.00	
9 Interiors	7,311.29	8,604.58	0.00	0.00	0.00	0.00	15,915.87
10 Specialty	0.00	0.00	0.00	0.00	0.00	0.00	
11 Equipment	0.00	0.00	0.00	0.00	0.00	0.00	
12 Furnishings	0.00	0.00	0.00	0.00	0.00	0.00	
13 Special	0.00	0.00	0.00	0.00	0.00	0.00	
14 Conveying	0.00	0.00	0.00	0.00	0.00	0.00	
15 Mechanical	0.00	0.00	0.00	0.00	0.00	0.00	

Ref	Desc	Qty	Unit
1	Cassions	82.19	CY
5	FLOORS ON GRADE	45.33	CY
30	FOOTINGS	36.75	CY
	FOOTINGS ON GRADE	9.95	CY

Qty	Unit	\$/Unit	U/Hr	Active	Comments
36.75	CY	55.73	5.250	<input checked="" type="checkbox"/>	Watch out for crossing sewer line!
0.00		0.00	0.00	<input type="checkbox"/>	

Type	ID	Description	PostType	Qty	Unit	\$/U
Ascy	03CP	PLACING-TRUCK		36.75	CY	0.00
Resc	037CON3	3000 LB CONCRETE [O]	7=Matl	36.75	CY	43.12
Resc	03EVIB	VIBERATOR MASTER	E=Equip	0.08	DAY	21.00
Resc	03EGEN	GENERATOR 3KW+GAS	E=Equip	0.08	DAY	38.00
Resc	016LB	LABORER	6=Wages	1.23	HR	8.35
Ascy	037W	VEHICULAR DEPAD SUPT		200.00	HR	0.00

Other Major QuickEST Features ...

- **Work Breakdowns (WBs) organize your takeoff...**
Normal WBs for Bid Item (CSI), Pay Item, and Job Cost.
Up to 99 WBs allowed such as Activity, Floor, or Structure.
WBs may have up to four breakdowns.
- **Resource Pricing by Region...**
Labor Rates automatically adjust (Davis Bacon vs. normal).
Material and Equipment may vary by Region.
- **Labor separated into Wages, Benefits, and Insurance...**
Markup Wages (not Benefits and Insurance) for Labor Taxes.
- **Labor Insurance Cost by Risk Level of the Work...**
A low risk job doesn't have extra insurance cost in it.
A high risk job covers its insurance cost.
- **Flexible Markups...**
Detail Markups (Payroll and Sales Taxes) are treated as cost.
Total Sheet Markups include a Bond Wizard.
- **Specifications and Notes from the database...**
Specifications by WB, Assembly, and Resource.
Notes for Sub Bid Quotes or for the Field.
- **The Crystal Report Writer...**
may be used for custom reports, when required.
- **Integrated QuickREPORT® Estimate Report Writer...**
Easily design or customize your own estimate reports.
- **Built-In Backup and Restore...**
Simple compressed backup and restore using the zip format.
- **Estimate Clone and Merge...**
Merge takeoff from several estimates quickly.
- **Export Job Cost and Purchase Order information...**
Direct to Evolution Accounting or using text interchange files.

QuickEST Databases ...

- **The SAMPLE Database (included)...**
Examples of a little bit of everything
- **Complete R.S. Means Support...**
All Major RSM Databases Supported
RSM Assemblies (Unicode) Supported
- **Contractor Developed Databases...**
General Contractor Database
Concrete Database
Masonry Database
Home Builder Database
Treatment Plant Database
(You will have to modify crews, productivities and pricing)

QuickEST is Sold in Modules ...

Purchase only what you need now.
(Add additional Modules when needed)

- Base System (3 Users included)
- Procedure Writing
- Bid Day Quotes (Base Bid plus Alternates)
- Digitizing (using QuickCALC®)
- Multi-User ... per User (4 or more)

90 Day Toll-Free Support Included
Customer Care Agreements Available

CONSTRUCTIVE
COMPUTING®

Since 1975

11125 Johnson Drive, Suite B
Shawnee, KS 66203

1-800-456-2113